

WILDSUN K25-TC

THE POWER OF THE SUN



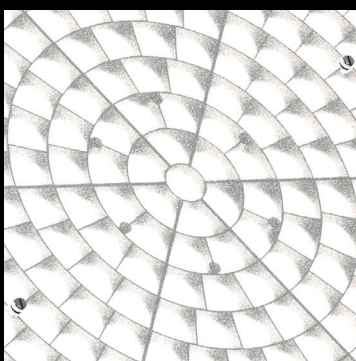
AYRTON
Digital Lighting

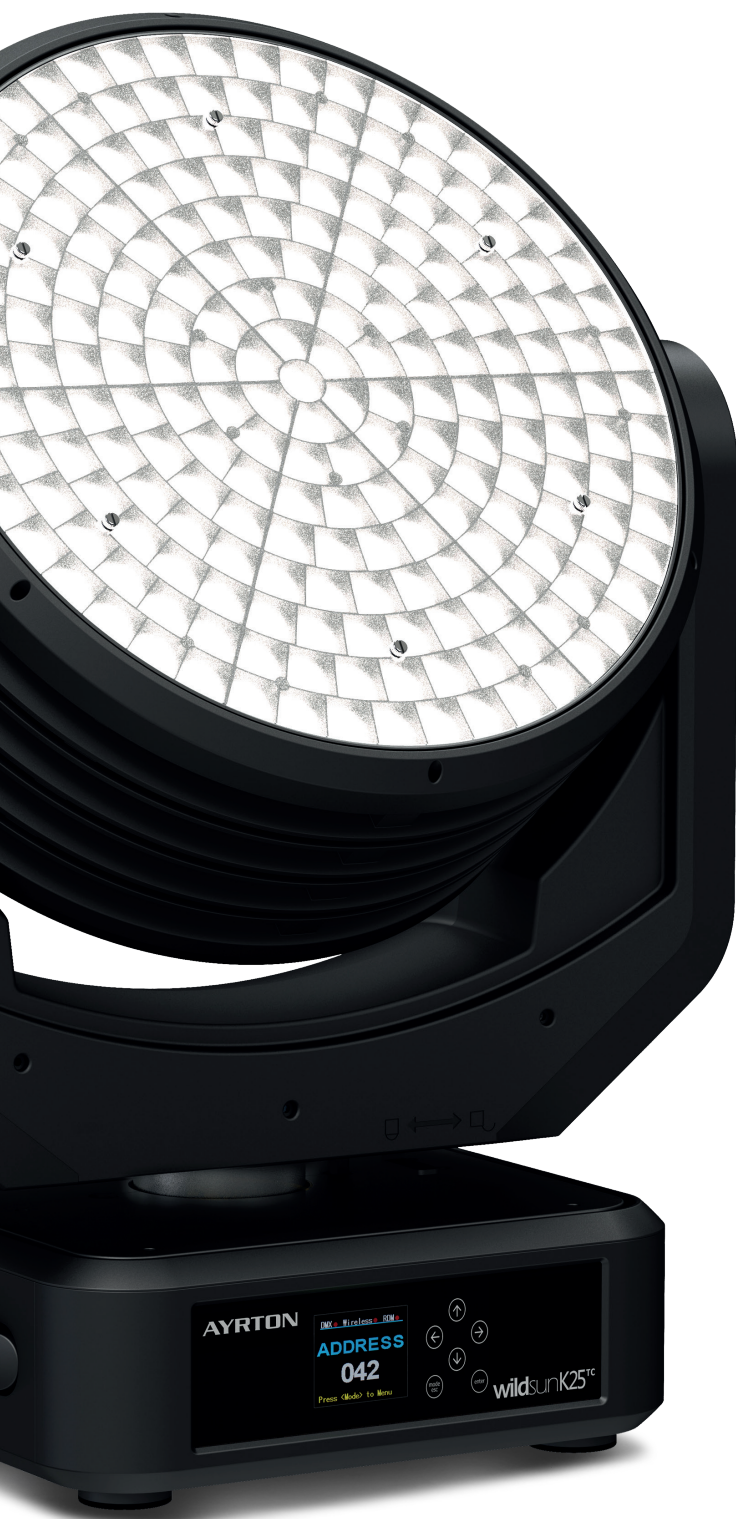
WILDSUN-K25 TC AUTOMATED LUMINAIRE

The new WILDSUN™K25-TC (True Colour) is an evolution of the WILDSUN K25, specially geared to shooting and broadcasting in high-definition. Producing extremely high-quality light without flickering, this luminaire achieves a colour temperature perfectly calibrated at 5700 K and a colour rendering index greater than 92. This is the only LED luminaire capable of measuring up to the classic Fresnel HMI 4,000 W and 6,000 W lights in terms of pure output. The new WILDSUN K25 True Colour is particularly suitable for meeting the stringent lighting demands of sporting events, fashion shows, car shows or any prestigious events requiring high-quality light and perfectly rendered colour. Fitted with 217 LED emitters, the luminaire delivers more than 63,000 lumens of overall output with 40% less energy consumption.



WILDSUN K25-TC is a powerhouse of technology and innovation. With the same basic specifications as the WILDSUN K25, it is equipped with powerful tri-phase stepper motors that allow fast, accurate and silent positioning. Its optical zoom has a 5:1 ratio with a zoom range of 12° to 60°. Luminous intensity can be fine-tuned using the precision electronic dimmer, for even greater flexibility of use. The light fixture output is equipped with a protective holographic filter in polycarbonate and an honeycomb system to prevent glare. The user can control each concentric circle individually to adjust the luminaire's power accordingly or, for stage lighting, create dynamic effects.





OPTICS

- 5:1 zoom high-resolution optic system
- Beam aperture: 12° to 60°
- Fast motorised linear zoom
- 408 mm front lenses cluster

LIGHT SOURCE

- 217 x 600 lumens 5700 K White LED source
- Light output: up to 60,000 lumens
- Rated life (L70): up to 40,000 hours
- Flicker free sources management, suitable for TV applications and all video recorded events

MOVEMENT

- Extremely accurate positioning
- Moving-head operated via either 8- or 16-bit resolution
- High-resolution stepper motors operated via microprocessors ensure extreme accuracy and smooth movements
- Pan and tilt automatic repositioning
- Moving-head range : 540° (pan), 245° (tilt)

COLOURS

- Monochromatic daylight source perfectly calibrated at 5700 K
- Color rendering index greater than 92

EFFECTS

- Graphical effects capabilities
- Eight LED concentric circles to adapt light output depending of use
- Effects can be coupled with beam, wash or matrix applications
- Built-in pattern effects with speed and fade controls for scenic applications

DIMMER / STROBE

- Electronic dimmer, allowing perfect light adjustment from 0 to 100% without colour variation
- Strobe effect, with speed adjustment from 1 to 25 flashes per second

SOFTWARE FEATURES

- Local DMX addressing of luminaire and optional parameters through its built-in LCD control panel
- Remote DMX addressing of luminaire and optional parameters through a standard RDM DMX controller
- Information menu including hour counter, temperature, software version

HARDWARE FEATURES

- Graphic LCD display for addressing and special functions settings, with flip function
- 6 menu buttons to set the functions
- Excess temperature protection
- Integrated wireless CRMX TiMo™ RDM receiver from LumenRadio™
- XLR 5 pin male and female connectors for DMX connection
- etherCON RJ45 IN / OUT connectors for ArtNet™ connection
- powerCON TRUE1 male connector for power connection

CONTROL

- DMX 512 protocol, through DMX cable or wireless system
- DMX-RDM compatible
- Stand-alone mode and Master/Slave modes
- ArtNet™ & sACN protocol through Ethernet cable
- Local control panel, with LCD display
- Choice of 5 DMX modes (from 11 to 22 DMX channels)

POWER SUPPLY

- Electronic supply with active PFC
- 100 to 240 Volts – 50/60 Hz
- Power 1,600 W maximum

COOLING SYSTEM

- Advanced cooling system based on Heatpipe technology
- Self adjusting variable speed fans for quiet operation (Auto mode)
- Selectable auto, stage & studio ventilation modes
- Safety protection against temperatures excesses

HOUSING

- Moving-head skeleton made of aluminium and steel metal plates
- Heatsinks in aluminium and copper, satin finish
- Moulded covers in self-extinguishing fire retardant ABS PC (V0 class)
- Two sides handles for transportation
- Four heavy-duty feet for better stability
- IP20 protection rating
- Exterior finish: black (Carbon)

INSTALLATION

- Fastening brackets system: two Omega ¼ turn brackets designed for use with standard clamps
- Mounting points: eight ¼ turn locking fittings allowing installation of Omega brackets on luminaire
- Safety cable attachment point

OPERATING PARAMETERS

- Operating positions: all (device on floor or fixed to a support)
- Maximum permitted ambient temperature (Ta max): 45 °C (113 °F)
- Minimum permitted ambient temperature (Ta min): -10 °C (14 °F)
- Minimum usage distance: 3.0 m (9.84 ft)

COMPLIANCE

- EU (EMC & LVD):**
- EMC Directive 2014/30/EU
- LVD Directive 2014/35/EU

SIZE

- Product: 547 x 702 x 348 mm (l x h x d)
- Flight-case Foam : 627 x 725 x 414 mm (l x h x d)

WEIGHT

- Product: 36.5 KG

PRODUCT CODES

- 013830: WILDSUN-K25 TC AUTOMATED LUMINAIRE





www.ayrton.eu

12.2017