

VERSAPIX-RS

FAN OF LIGHT



AYRTON
Digital Lighting

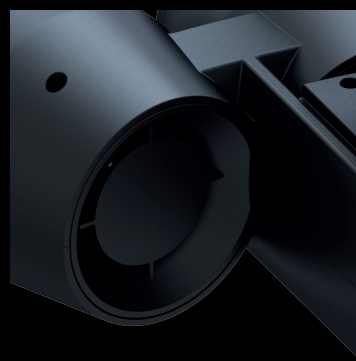
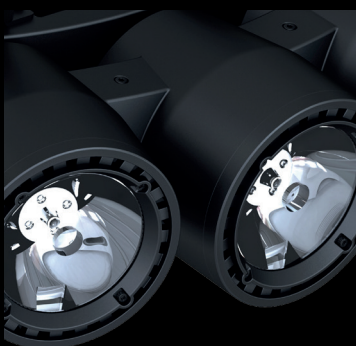
VERSAPIX-RS CREATIVE SOLUTIONS

VERSAPIX, a contraction of versatile and pixel, is a veritable fan of light. Brilliantly evolved from the VERSAPIX 100 concept first introduced in 2012, the VERSAPIX-RS is the first in the new ultra-radical "RS" product series. A new 40 W reduced-scale multi-chip RGBW LED emitter has been combined with innovative 94 mm diameter high-efficiency optics.

Once again pushing the limits, this luminaire can generate an ultra-powerful 3.5° beam with a record-breaking centre-beam intensity of 200 candela per lumen. With three times more power and six times more centre-beam intensity, the VERSAPIX-RS offers infinite possibilities for creating 3D volumetric lighting effects regardless of the ambient light conditions.



Because of its configuration and power, the VERSAPIX-RS required the development of a specific new cooling system for each of the emitters that evacuates the air at the edges of the optics while preventing haze and dust contamination (patent pending). The VERSAPIX-RS, the most mobile of the fixed luminaires, was designed to be modular, with five emitters in a fan-shaped 90° arrangement, enabling independent control of each of the emitters. This offers a range of installation possibilities, such as combining the luminaires to create complex shapes (disks, spheres, cylinders, etc.) or using individual luminaires in a variety of architectural configurations. With the VERSAPIX-RS, your imagination is the limit.





OPTICS

- Beam aperture: 3.5°
- 82% optic efficiency
- 5 x 94 mm PMMA collimator optic

LIGHT SOURCE

- 5 x 1,000 lumens RGBW High-Power LED source
- Light output: up to 4,000 lumens
- Rated life (L70): up to 40,000 hours
- Flicker free sources management, suitable for TV applications and all video recorded events

COLOURS

- Sophisticated 4 colours RGBW mixed, reaching high Colour Rendering Index
- Light beam with no colour shadows, and rich saturated and pastel colour-hues
- 4.29 billion colours (8 bit resolution)
- Virtual colour wheel, including most usuals white colour temperature presets
- Dynamic colour macro effect with variable speed

EFFECTS

- 2D & 3D graphical effects capabilities
- Effects can be coupled with beam, wash or matrix applications
- Built-in pattern effects with speed and fade controls for scenic applications

DIMMER / STROBE

- Electronic dimmer, allowing perfect light adjustment from 0 to 100% without colour variation
- White or colour strobe effect, with speed adjustment from 1 to 25 flashes per second

SOFTWARE FEATURES

- Local DMX addressing of luminaire and optional parameters through its built-in LCD control panel
- Remote DMX addressing of luminaire and optional parameters through a standard RDM DMX controller
- Information menu including hour counter, temperature, software version

HARDWARE FEATURES

- Graphic LCD display for addressing and special functions settings, with flip function
- 6 menu buttons to set the functions
- Excess temperature protection
- Integrated wireless CRMX TiMo™ RDM receiver from LumenRadio™
- XLR 5 pin male and female connectors for DMX connection
- powerCON TRUE1 male and female connectors for power connection

CONTROL

- DMX 512 protocol, through DMX cable or wireless system
- DMX-RDM compatible
- Stand-alone mode and Master/Slave modes
- ArtNet™ & sACN protocol through Ethernet cable
- Local control panel, with LCD display
- Choice of 3 DMX Modes (from 6 to 29 DMX channels)

POWER SUPPLY

- Electronic supply with active PFC
- 100 to 240 Volts – 50/60 Hz
- Power 250 W maximum

COOLING SYSTEM

- Advanced cooling system
- Self adjusting variable speed fans for quiet operation (Auto mode)
- Selectable auto, stage & studio ventilation modes
- Safety protection against temperatures excesses

HOUSING

- Body made of aluminium and steel metal plates
- Heatsinks in aluminium, satin finish
- Moulded covers in self-extinguishing fire retardant ABS PC (V0 class)
- Single yoke in aluminium
- IP20 protection rating
- Exterior finish: black (Carbon)

INSTALLATION

- 4 fixing points for multiple products assembly
- 1 rotating handles to adjust yoke
- Self-alignment via optional positioning system
- Safety cable attachment point

OPERATING PARAMETERS

- Operating positions: all (device on floor or fixed to a support)
- Maximum permitted ambient temperature (Ta max): 45 °C (113 °F)
- Minimum permitted ambient temperature (Ta min): -10 °C (14 °F)
- Minimum usage distance: 5.0 m (16.40 ft)

COMPLIANCE

- EU (EMC)**
 - EMC Directive 2014/30/EU
- EU (LVD)**
 - LVD Directive 2014/35/EU
- US Safety**
 - UL 1573

SIZE

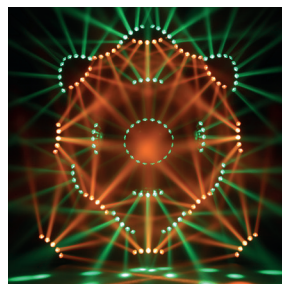
- Product: 676 x 300 x 285 mm (l x h x d)
- Flight-case foam: 750 x 325 x 220 mm (l x h x d)

WEIGHT

- Product: 8.7 KG

PRODUCT CODES

- 018550: VERSAPIX-RS CREATIVE SOLUTION





AYRTON

Digital Lighting

www.ayrton.eu

12.2015