

NANDOBEAM-S6

EXTREMELY VERSATILE



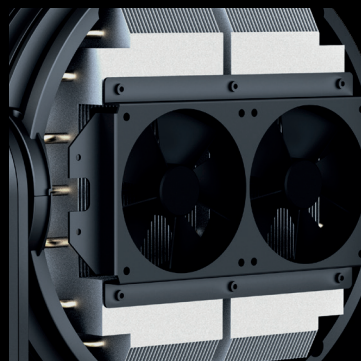
AYRTON
Digital Lighting

NANDOBEAM-S6 AUTOMATED LUMINAIRES

NANDOBEAM-S6 is a very powerful and ultra-fast new generation moving-head fixture in a compact housing. Its advanced and highly efficient proprietary optical system coupled with powerful 15 W RGBW LED sources provide a narrow 8° beam as well as wide 40° coverage. NANDOBEAM-S6's thirty-seven 15 W LED are cooled by a heatpipe equipped with heat-transfer fluids and heat-exchange material. This advanced cooling technology gives an extended LED lifetime, quiet operation and maximum light source efficiency. A 6,000 lumens output at its 8° angle makes NANDOBEAM-S6 the perfect lighting tool for use as a beamlight moving-head. Its wide angle capabilities of up to 40° coupled with the same 6,000 lumens light output as its narrow beam angle gives great washlight potential. NANDOBEAM-S6 is equipped with new generation three phase stepper motors that allow quick and precise movement essential for this type of application. Very compact, these new motors fit perfectly into the minimalist design of the luminaire.



The high quality of its colour-mixing makes NANDOBEAM-S6 suitable for the most demanding environments. AYRTON's legendary consistency and quality of colour coupled with total control of its beam dispersion at any angle makes NANDOBEAM-S6 perfect for TV studios and stage, while low noise levels and accuracy of movement make it equally suited to events. NANDOBEAM-S6 is equally happy in front of an audience or a camera. Operated in Expanded Full Colour mode its 3 rings of LED emitters gathered around a central LED can be individually controlled or used with onboard effects to become a very versatile beamlight, washlight or matrix tool. NANDOBEAM-S6 is a versatile product that integrates a faster, new generation 32-bit circuit board and benefits from extensive connectivity and can be controlled by DMX-RDM, ArtNet™ or via LumenRadio™ DMX-RDM wireless connection.





OPTICS

- 2-elements 5:1 zoom high-resolution optic system
- Beam aperture: 8° to 40°
- Fast motorised linear zoom
- 210 mm front lenses cluster

LIGHT SOURCE

- 37 x 500 lumens RGBW High-Power LED source
- Total luminaire output: up to 6,000 lumens
- Rated life (L70): up to 40,000 hours
- Flicker free sources management, suitable for TV applications and all video recorded events

MOVEMENT

- Extremely accurate positioning
- Moving-head operated via either 8- or 16-bit resolution
- High-resolution stepper motors operated via microprocessors ensure extreme accuracy and smooth movements
- Pan and tilt automatic repositioning
- Moving-head range : 540° (pan), 270° (tilt)

COLOURS

- Sophisticated 4 colours RGBW mixed, reaching high Colour
- Rendering Index
- Uniform light beam with no colour shadows, and rich saturated and pastel colour-hues
- 4.29 billion colours (8 bit resolution)
- Virtual colour wheel, including most usuals white colour temperature presets
- Dynamic colour macro effect with variable speed

EFFECTS

- Graphical effects capabilities
- Effects can be coupled with beam, wash or matrix applications
- Built-in pattern effects with speed and fade controls for scenic applications

DIMMER / STROBE

- Electronic dimmer, allowing perfect light adjustment from 0 to 100% without colour variation
- White or colour strobe effect, with speed adjustment from 1 to 25 flashes per second

SOFTWARE FEATURES

- Local DMX addressing of luminaire and optional parameters through its built-in LCD control panel
- Remote DMX addressing of luminaire and optional parameters through a standard RDM DMX controller
- Information menu including hour counter, temperature, software version

HARDWARE FEATURES

- Graphic LCD display for addressing and special functions settings, with flip function
- 6 menu buttons to set the functions
- Excess temperature protection
- Integrated wireless CRMX TiMo™ RDM receiver from LumenRadio™
- XLR 5 pin male and female connectors for DMX connection
- etherCON RJ45 IN / OUT connectors for ArtNet™ connection
- powerCON TRUE1 male and female connectors for power connection

CONTROL

- DMX 512 protocol, through DMX cable or wireless system
- DMX-RDM compatible
- Stand-alone mode and Master/Slave modes
- ArtNet™ & sACN protocol through Ethernet cable
- Local control panel, with LCD display
- Choice of 3 DMX Modes (from 17 to 32 DMX channels)

POWER SUPPLY

- Electronic supply with active PFC
- 100 to 240 Volts – 50/60 Hz
- Power 650 W maximum

COOLING SYSTEM

- Advanced cooling system based on Heatpipe technology
- Self adjusting variable speed fans for quiet operation (Auto mode)
- Selectable auto, stage & studio ventilation modes
- Safety protection against temperatures excesses

HOUSING

- Moving-head skeleton made of aluminium and steel metal plates
- Heatsinks in aluminium and copper, satin finish
- Moulded covers in self-extinguishing fire retardant ABS PC (V0 class)
- Two sides handles for transportation
- Four heavy-duty feet for better stability
- IP20 protection rating
- Exterior finish: black (Carbon)

INSTALLATION

- Fastening brackets system: two Omega ¼ turn brackets designed for use with standard clamps
- Mounting points: eight ¼ turn locking fittings allowing installation of Omega brackets on luminaire
- Safety cable attachment point

OPERATING PARAMETERS

- Operating positions: all (device on floor or fixed to a support)
- Maximum permitted ambient temperature (Ta max): 45 °C (113 °F)
- Minimum permitted ambient temperature (Ta min): -10 °C (14 °F)
- Minimum usage distance: 1.5 m (4.92 ft)

COMPLIANCE

- EU (EMC)**
- EMC Directive 2014/30/EU
- EU (LVD)**
- LVD Directive 2014/35/EU
- US Safety**
- UL 1573

SIZE

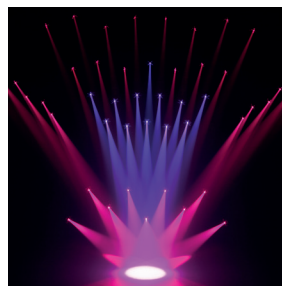
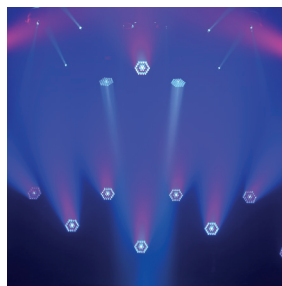
- Product: 352 x 467 x 267 mm (l x h x d)
- Flight-case foam: 410 x 500 x 330 mm (l x h x d)

WEIGHT

- Product: 13.9 KG

PRODUCT CODES

- 013450 : NANDOBEAM S6 WASH LUMINAIRE





AYRTON

Digital Lighting

www.ayrton.eu

02.2015