

MISTRAL

HIGHLY COMPACT, LIGHTWEIGHT AND POWERFUL



AYRTON

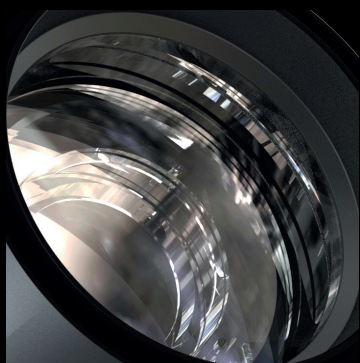
Digital Lighting

MISTRAL AUTOMATED LUMINAIRE

Ayrton has once again pushed the limits with Mistral. A versatile, new fully equipped 300 W spot luminaire in the same ultra-compact format as MERAK. Its new 13-lens proprietary optical system delivers a 8:1 zoom ratio with a zoom range of 6.7° to 53°. The optics, equipped with a 119 mm frontal lens, can achieve an extremely uniform flat beam that can render images perfectly in all conditions and at any beam angle. MISTRAL comes in two versions, each to meet the specific requirements of lighting professionals. MISTRAL-S is designed for scenic applications. It is equipped with a new LED module, delivering powerful metallic white light with record-breaking output of 18,000 lumens and a colour temperature of 7000 K. Devised specifically for applications that require perfect colour reproduction, MISTRAL-TC is equipped with an entirely new LED module using a monochromatic light source with a native colour rendering index greater than 90, extremely high TM30 readings and a colour temperature of 6000 K.



Feature-rich from the factory, MISTRAL includes a CMY colour mixing system combined with a variable CTO and a seven-position complementary colour wheel for producing an infinite palette of vivid pastels and saturated colours. The effects section includes 16 interchangeable HD glass gobos on two wheels: one rotating wheel with seven positions and one fixed wheel with nine positions. Its continuous dynamic effects wheel can be used in combination with the two gobo wheels to create unique graphical effects. MISTRAL also features a 15-blade iris diaphragm, a five-facet rotating prism, and a soft-edge frost filter as standard equipment. MISTRAL has a highly efficient phase-change liquid cooling system using a heat pipe that includes a particularly effective Silent ventilation mode, designed for studio and theatre applications.





OPTICS

- 13-element 8:1 zoom
- Beam aperture: 6.7° to 53°
- 119 mm frontal lens

LIGHT SOURCE

MISTRAL-S

- 26,000 lumens 8000 K white light engine
- Total luminaire output: up to 18,000 lumens
- Colour temperature output: 7000 K
- CRI: greater than 70

MISTRAL-TC

- 21,000 lumens 7000 K white light engine
- Total luminaire output: up to 14,000 lumens
- Colour temperature output: 6000 K
- CRI: greater than 90

- Rated life (L70): up to 40,000 hours
- Flicker-free source

MOVEMENT

- Highly accurate positioning
- Resolution: 8- or 16-bit
- Smooth movement
- Pan and tilt with automatic repositioning
- Range: 540° (pan), 270° (tilt)

COLOURS

- Sophisticated CMY colour mixing
- Variable CTO
- 7 complementary colours

GOBOS

- 7 indexable rotating HD glass gobos
- Adjustable-speed rotating gobo
- 9 fixed HD glass gobos
- Gobo diameter: 25.5 mm
- Image diameter: 20.0 mm
- Gobo thickness: 1.1 mm

IRIS DIAPHRAGM

- 15-blade iris diaphragm
- Range: 15% to 100% open

FROST

- Light frost filter (heavy frost filter in option)

PRISM

- 5-facet circular prism
- Rotating and indexable

EFFECTS

- Focusable graphic animation effect-wheel
- Continuous rotation in both directions
- Sparkle effect: speed and fade adjustment

DIMMER / STROBE

- Electronic dimmer from 0 to 100%
- Strobe effect: 1 to 25 flashes per second

HARDWARE FEATURES

- Graphic LCD display with flip function
- Clicking jog wheel to set functions
- Integrated LumenRadio™ receiver
- XLR 5 pin connectors
- powerCON TRUE1 connectors

CONTROL

- DMX 512 protocol
- DMX-RDM compatible
- Stand-alone mode, local control panel
- 3 DMX modes (26 to 39 DMX channels)

POWER SUPPLY

- 100 to 240 Volts – 50/60 Hz
- Power: 450 W maximum

COOLING SYSTEM

- Advanced liquid cooling system
- Self-adjusting variable speed fans
- Selectable ventilation user modes
- Excess-temperature protection

HOUSING

- Skeleton in aluminium and steel plates
- Base in die-cast aluminium
- Moulded covers in ABS PC (V0 class)
- Two-side handles
- Four heavy-duty feet
- IP20 protection rating
- Exterior finish: black (Carbon)

INSTALLATION

- Two Omega ¼ turn brackets
- Four ¼ turn mounting points
- Safety cable attachment point

OPERATING PARAMETERS

- Maximum temperature: 45 °C (113 °F)
- Minimum temperature: -10 °C (14 °F)
- Minimum usage distance: 1.5 m (4.92 ft)

COMPLIANCE

EU (EMC & LVD):

- EMC Directive 2014/30/EU
- LVD Directive 2014/35/EU

US Safety

- UL 1573
- FCC Part 15, Subpart B: 2018

SIZE

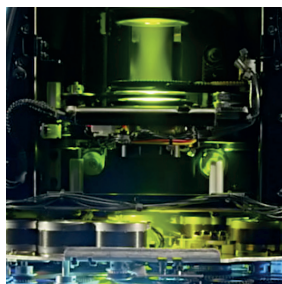
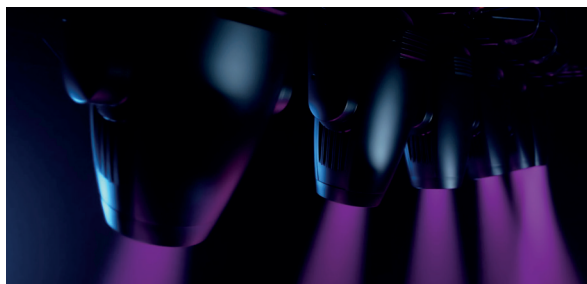
- Product: 365 x 591 x 212 mm (l x h x d)
- Flight-case Foam : 450 x 620 x 280 mm (l x h x d)

WEIGHT

- Product: 18.9 KG

PRODUCT CODES

- 011240 : MISTRAL-S AUTOMATED LUMINAIRE
- 011250 : MISTRAL-TC AUTOMATED LUMINAIRE





www.ayrton.eu

03.2018