

# HURACÁN<sup>x</sup>

graphicadelic power



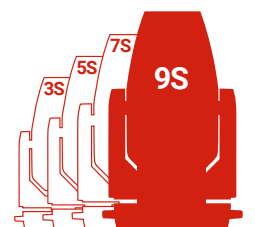
**AYRTON**

Digital Lighting



## **Huracán-X** **graphicadelic power**

Whether you're into pop... rock... or psychedelic...  
Huracán-X... the new profile luminaire designed by Ayrton...  
is literally mind-blowing.



**W**ith its 1,000 W high-efficiency LED module and powerful, oversized cooling system, Huracán-X delivers unbelievable light output... A marvel of technology that can produce a trillion shades of colour. Unheard of!

Huracán-X offers mind-blowing creative potential. Equipped with new effects cassettes and graphic animation wheels, it will stimulate your eye and boost your artistic impulses.



Lumens

**53,000**

Colour temperature

**7000 K**

Native CRI

**greater than 70**

Beam Aperture

**6° to 60°**

Front Lens

**178 mm**



## The graphic revolution has only just begun

Huracán-X is a marvel of technology that brings exceptional light output to a standard-equipment luminaire in a class by itself – a formidable graphical tool for enhancing creativity. Fitted with a next-generation oversized cooling system and a high-efficiency 1,000 W LED module, Huracán-X produces record output of 53,000 lumens at a colour temperature of 7000 K when operating at a steady state. For this exceptional luminaire, AYRTON has developed an entirely new complex colour mixing system capable of generating trillions of colours (patent pending).

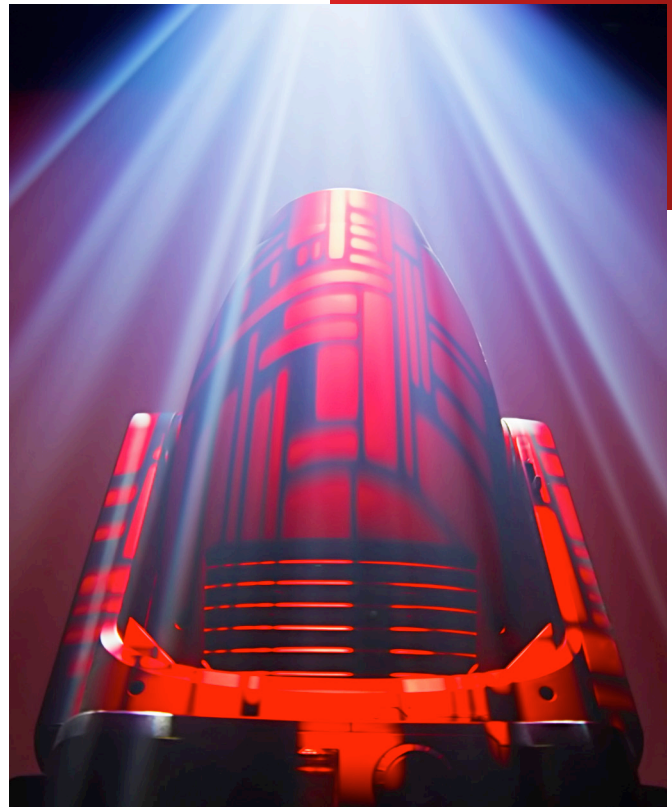


## Imagining and designing mind-blowing profile luminaires is one of our obsessions...

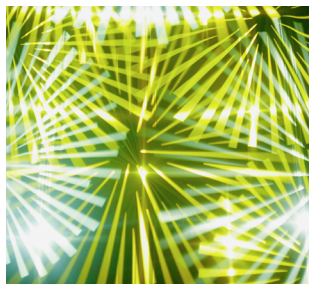
A triple variable colour temperature corrector allows subtle adjustment from 2700 K to 15000 K and offers noticeable CRI improvement. Designed to project complex graphical effects, Huracán-X boasts specifically developed optics that deliver an extremely uniform flat beam with no hot spot and reproduce high-definition images. The proprietary optical system, equipped with a 178 mm frontal lens, uses 13 lenses, producing an 10:1 zoom ratio and a zoom range of 6° to 60°.



**10:1** Zoom ratio



## Two 7-position wheel for interchangeable effects cassettes or gobos

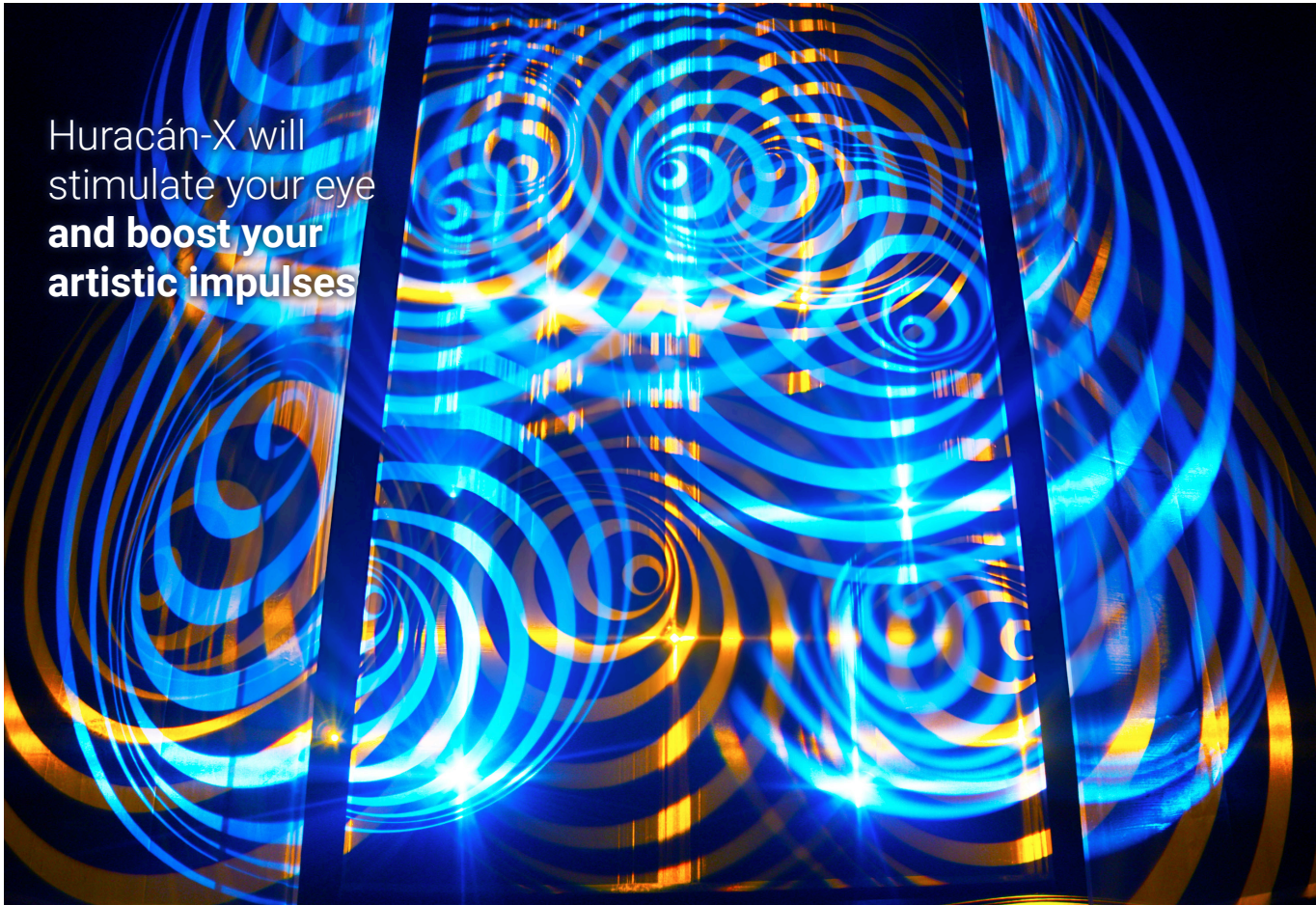


## With Huracán-X, you'll feel the urge to push your creative boundaries

Huracán-X offers an advanced framing section, which allows accurate positioning of four shutter blades on a 100% surface area in all positions, so that the user can frame any object regardless of the luminaire's position. Huracán-X is provided with an amazingly complete graphical system with one 7-position wheel for interchangeable effects cassettes or gobos. The wheel is fitted with 5 rotating gobos and 2 effects cassettes that can create dynamic effects by superimposing two complementary inverted images in counter rotation (patent pending). A second interchangeable gobo wheel is equipped with 7 rotating gobos.

**CMY & RGB**  
animation  
effects wheel





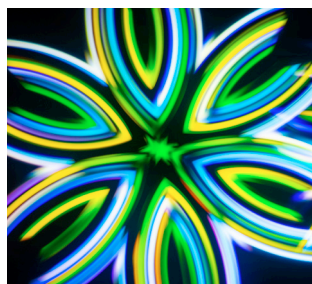
Huracán-X will stimulate your eye **and boost your artistic impulses**

### In the endless pursuit of the total graphicadelic experience...

A monochromatic multi-position effects wheel allows horizontal, vertical or axial scrolling for creating flame, water or radiant effects (patent pending). A multi-layer CMY & RGB wheel can generate multicolour effects. The gobos, cassettes and effects wheel are made of high-definition tempered glass. Additionally, standard features in Huracán-X include a 15-blade iris diaphragm, a light and a heavy frost filter, 2 rotating prisms, a 5-facet circular and a 4-facet linear prism. Huracán-X is the ultimate graphical tool for applications requiring power and refinement.



Two double-layer indexable rotating **effects cassettes**



### Colours



CMY colour mixing system



Variable CTB / CTO / CTP colour temperature correction



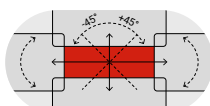
1/4 CTB Congo Blue Green Orange Blue Red

### Gobos

Gobos Ø 30 mm | Image Ø 25 mm



Framing system



100% surface area

Iris diaphragm



15% to 100% open

Frost filters

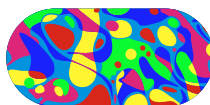


Light Heavy

Graphical animation effects wheel

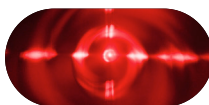


Monochromatic

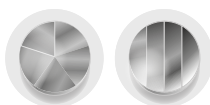


CMY & RGB Colours

Sparkle effect



Prisms



Circular Linear

Dimmer



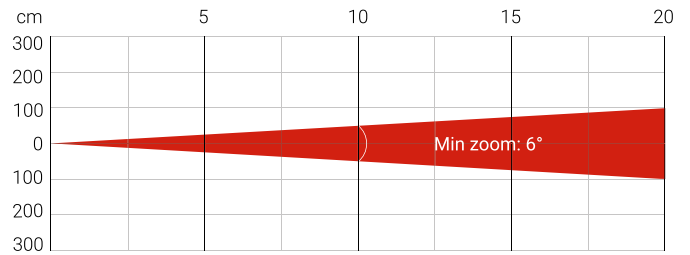
0 to 100 %

Strobe

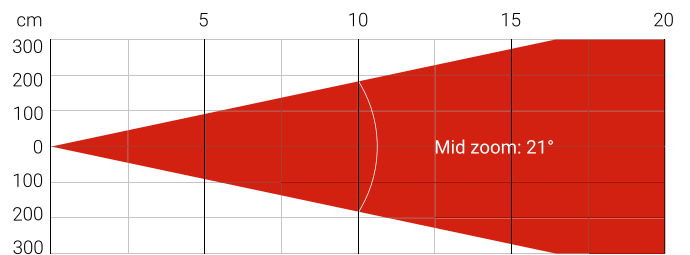


1 to 25 fl./sec.

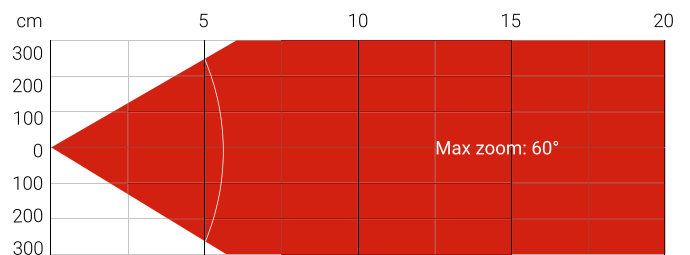
### Photometry



Distance (m)	5		10		15		20	
Unit	lux	Ø	lux	Ø	lux	Ø	lux	Ø
White	96,980	0.52	23,440	1.04	10,450	1.56	5,913	2.08



Distance (m)	5		10		15		20	
Unit	lux	Ø	lux	Ø	lux	Ø	lux	Ø
White	16,980	1.85	4,491	3.62	2,199	5.30	1,296	7.10



Distance (m)	5		10		15		20	
Unit	lux	Ø	lux	Ø	lux	Ø	lux	Ø
White	2,459	5.83	736	11.66	356	17.49	153	23.32

Total Flux	52,900 lm Zoom at 41.5% (Integrating sphere)
------------	--

CCT LED Source	8000 (±400 K)
CCT Luminaire	7000 (±400 K)
Ra Luminaire	72 (Ra: 70)
TLCI	49
TM-30	Rf: 69.9 Rg: 93

Fan Mode	Noise Level (dBA)	Flux (lm)
Auto Mode	48	50,900
Silence Mode	42	42,300
Stage Mode	60	52,900
Studio Mode	43	45,700

Note: noise measured at 1m distance, static status, ambient 31dBA

## OPTICS

- 13-elements 10:1 zoom high-resolution optic system
- Beam aperture: 6° to 60°
- Fast motorised linear zoom
- Tempered anti-reflective coated lenses
- 178 mm frontal lens for greater performance

## LIGHT SOURCE

- 75,000 lumens 8000 K white light engine
- Total luminaire output: up to 53,000 lumens
- Colour temperature output: 7000 K
- CRI: greater than 70
- Rated life (L70): up to 40,000 hours
- Flicker-free source management suitable for TV applications and all video-recorded events

## MOVEMENT

- Extremely accurate positioning
- Moving-head operated via either 8- or 16-bit resolution
- High-resolution stepper motors operated via microprocessors to ensure extreme accuracy and smooth movement
- Pan and tilt automatic repositioning
- Moving-head range: 540° (pan), 270° (tilt)

## COLOURS

- Complex CMY colour mixing system capable of generating billions colours (patent pending)
- Variable CTB colour temperature correction
- Variable CTO colour temperature correction
- Variable CTP colour temperature correction
- Fixed colour wheel with six complementary colours

## GOBOS

- Indexable rotating double layer cassette wheel with 2 effect cassettes and 5 high-precision glass gobos plus open position
- Indexable rotating gobo wheel with 7 high-precision glass gobos, plus open position
- Adjustable-speed rotating cassette and gobo in both directions
- Gobo diameter: 30.0 mm
- Image diameter: 25.0 mm
- Gobo thickness: 1.1 mm

## FRAMING SYSTEM

- 4 individually positionable shutter blades on a 100% surface area in all positions
- Rotation of the framing system module: +/- 45°

## IRIS DIAPHRAGM

- Fast iris diaphragm with adjustable dynamic effects
- Iris range: 15% to 100% open

## FROSTS

- 2 frost filters: one light, one heavy

## EFFECTS

- Monochromatic multi-position graphical animation effects wheel with continuous rotation in both directions
- CMY & RGB colour graphic animation effect-wheel with continuous rotation in both directions
- 2 rotating and indexable prisms: one 5-facet circular, one 4-facet linear
- Sparkle effect: dynamic animation effect with speed and fade adjustment

## DIMMER / STROBE

- Electronic dimmer, allowing perfect light adjustment from 0 to 100% without colour variation
- Strobe effect, with speed adjustment from 1 to 25 flashes per second

## SOFTWARE FEATURES

- Local DMX addressing of luminaire and optional parameters through its built-in LCD control panel
- Remote DMX addressing of luminaire and optional parameters through a standard RDM DMX controller
- Information menu including hour counter, temperature, software version

## HARDWARE FEATURES

- Graphic LCD display for addressing and special functions settings, with flip function
- Clicking jog wheel to set functions
- Excess temperature protection
- Integrated wireless CRMX TiMo™ RDM receiver from LumenRadio™
- XLR 5 pin male and female connectors for DMX connection
- EtherCON RJ45 IN / OUT connectors for ArtNet™
- PowerCON TRUE1 male connector for power connection

## CONTROL

- DMX 512 protocol, through DMX cable or a wireless system
- DMX-RDM compatible
- Stand-alone mode and Master/Slave modes
- ArtNet™ & sACN protocol through Ethernet cable
- Local control panel, with LCD display
- Choice of 3 DMX modes (from 44 to 70 DMX channels)

## POWER SUPPLY

- Electronic supply with active PFC
- 120 to 240 Volts – 50/60 Hz
- Power: 1,400 W maximum

## COOLING SYSTEM

- Advanced liquid cooling system
- Self-adjusting variable speed fans for quiet operation
- Selectable ventilation user's modes with a new Silent Mode
- Safety protection against temperatures excesses

## HOUSING

- Moving-head skeleton made of aluminium and steel metal plates
- Base in die-cast aluminium
- Heatsinks in aluminium and copper
- Moulded covers in self-extinguishing fire retardant ABS PC (V0 class)
- Two-side handles for transportation
- Four heavy-duty feet for better stability
- IP20 protection rating
- Exterior finish: black (Carbon)

## INSTALLATION

- Fastening brackets system: two Omega ¼ turn brackets designed for use with standard clamps
- Mounting points: eight ¼ turn locking fittings allowing installation of Omega brackets on luminaire
- Safety cable attachment point

## OPERATING PARAMETERS

- Operating positions: all (device on floor or fixed to a support)
- Maximum permitted ambient temperature (Ta max): 45 °C (113 °F)
- Minimum permitted ambient temperature (Ta min): -10 °C (14 °F)
- Minimum usage distance: 2.0 m (6.56 ft)

## COMPLIANCE

### EU (EMC & LVD):

- EMC Directive 2014/30/EU
- LVD Directive 2014/35/EU

### US (Safety & EMC):

- UL 1573
- FCC Part 15, Subpart B: 2018

## SIZE

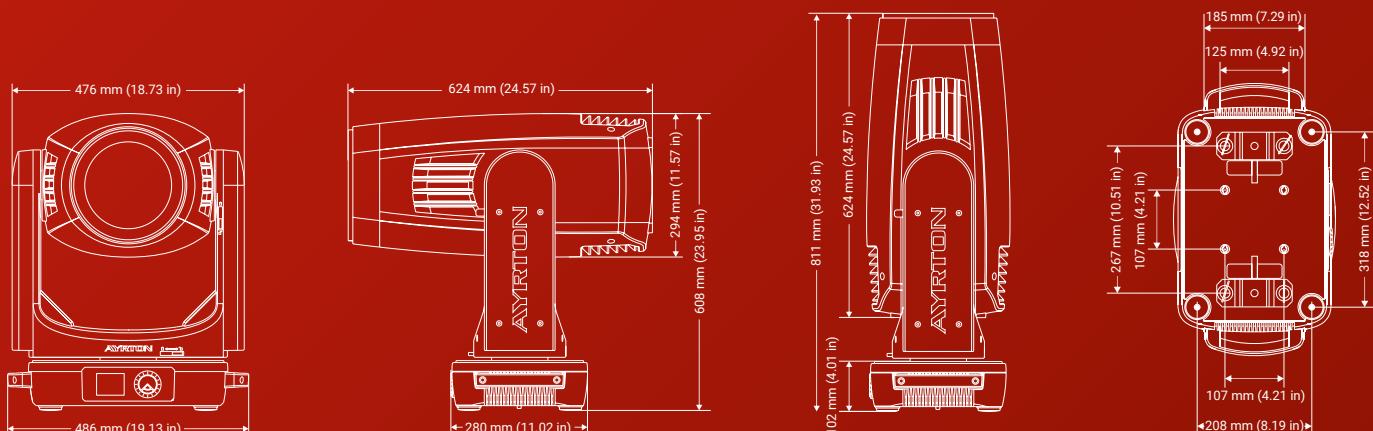
- Product: 486 x 811 x 294 mm (l x h x d)
- Flight-case foam: 715 x 555 x 630 mm (l x h x d)

## WEIGHT

- Product: 44.0 kg

## PRODUCT CODES

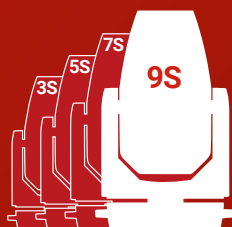
- 011860: HURACÁN-X - CLASSICAL 9 SERIES





**AYRTON**

Digital Lighting



[www.ayrton.eu](http://www.ayrton.eu)

09.2019